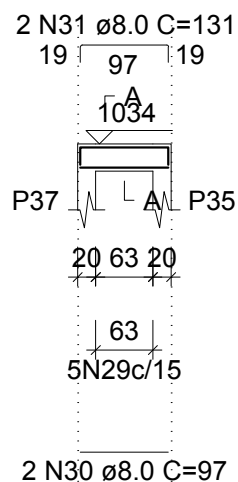
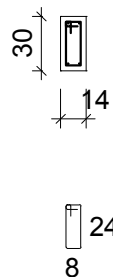


## V7 (14 x 30)

ESC 1:100



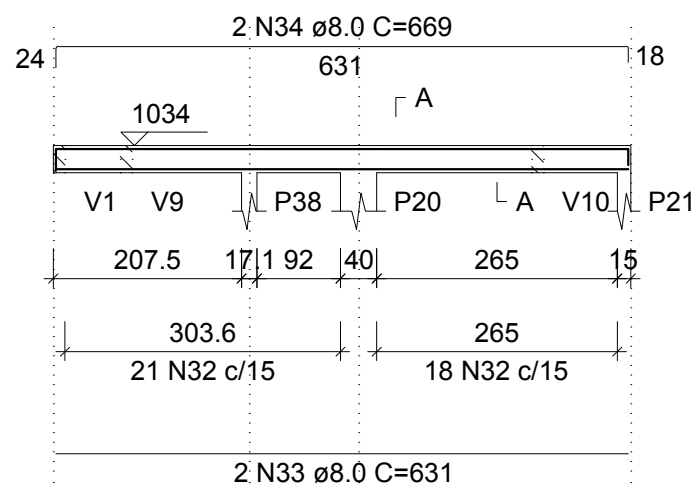
### SEÇÃO A-A ESC 1:50



5 N29 ø5.0 C=75

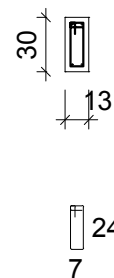
## V8 (13 x 30)

ESC 1:100



### SEÇÃO A-A

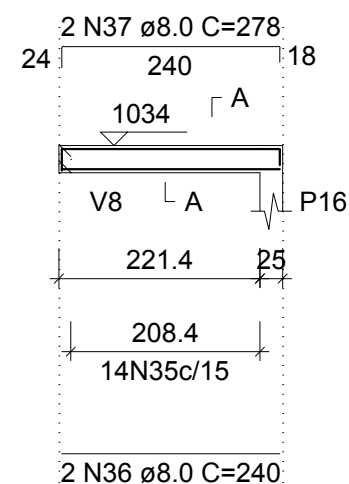
ESC 1:50



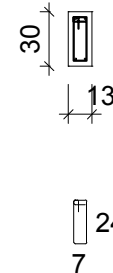
39 N32 ø5.0 C=73

## V9 (13 x 30)

ESC 1:100



### SEÇÃO A-A ESC 1:50



14 N35 ø5.0 C=73